



# 北美華人教育研究及策劃協會

## Chinese American Educational Research and Development Association

# NEWSLETTER

JULY 2006

### In this issue you can find:

- **Message from the President** 1
- **CAERDA Board Member Updates** 1
- **2006 Conference Highlights** 2
- **Information about Membership Renewal** 3
- **Upcoming Conference: International Conference on Educational Evaluation** 4
- **Upcoming Conference: 2007 CAERDA International Conference** 5
- **Position Announcement** 6

### 2006-2007 Executive Directors

**President:** Aubrey Wang  
**Vice President:** Leigh LihShing Wang  
**Secretary:** Rong Yuan  
**Treasurer:** Ji-Mei Chang

**Board Directors**  
 Ji-Mei Chang  
 Chen-Ling Chou  
 Kit Tai Hau  
 Allen Huang  
 Yann-Yann Shieh  
 Aubrey Wang  
 Leigh LihShing Wang  
 Wu Tien Wu  
 Rong Yuan

**Advisors**  
 Shwu-Yong L. Huang  
 Chi-en Hwang  
 Samuel Peng  
 Fang Wu  
 Yong Zhao

**CAERDA**  
 P. O. Box 112410  
 Campbell, CA 95011-2410  
 WWW.CAERDA.ORG

Dear CAERDA member:

I am honored to serve as CAERDA's President for another term. In keeping with CAERDA's mission of promoting excellence in education for Chinese and Chinese American students and researchers, this year, we will focus our efforts on several fronts:

- A. Outreach. Increasing our presence in China, Hong Kong, Taiwan, and the U.S. by systematically reaching out to other associations.
- B. Service. Expanding our services to our members by incorporating informational workshops at our conferences and by developing an academic recognition program for our members.
- C. Quality. Improving the quality of our conference and publication through systematic outreach to relevant organizations, increasing the pool of keynote speakers, and publish a post-conference edited book on the conference theme.

Each of these efforts currently is undergoing and is being led by a dedicated CAERDA member. We would love to have you working with us on these issues. Please let us know which issue(s) you would be interested in working on and the best way to contact you.



Sincere regards,

Aubrey H. Wang, Ph.D.  
 President 2005-2007  
 CAERDA

## 2006 Conference Highlights

April 6-7, 2006  
San Francisco, CA



The 14<sup>th</sup> annual international conference of the Chinese American Educational Research and Development Association (CAERDA) was held successfully in the Moscone Convention Center in San Francisco, California on April 6 and 7, 2006. The theme for this year's conference was "In Pursuit of Excellence and Equity in Education: Influences of Language, Culture, and Community Involvement on Student Learning and Achievement." For the first time in the history of CAERDA, the conference was planned and executed in collaboration with the US-China Center for Research on Educational Excellence of Michigan State University.

The 14<sup>th</sup> CAERDA conference had a very rich program, which consisted of a total of 8 concurrent paper presentation sessions and one poster session that covered a variety of topics.

These topics ranged from Social and Cultural Context of Education, Measurement and Methodology,

Instructional Design and Curriculum Studies, School Reforms, to Technology and Its Application in Education.

Moreover, Dr. Yong Zhao, Director of US-China Center for Research on

Educational Excellence, Michigan State University organized several panel discussion sessions with a focus on cross-cultural comparisons between students in China and U.S., and on finding ways to close the achievement gaps. His presentations generated wide interests and insightful discussions from the audience. Two keynote speakers highlighted this year's conference.

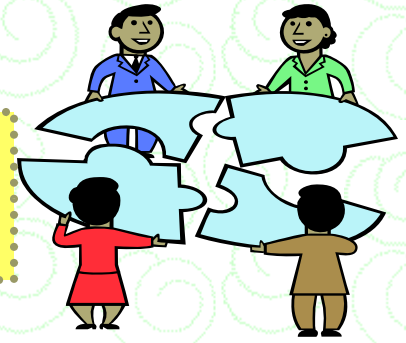


The conference was opened with a keynote speech given by the distinguished scholar Dr. Zhang Jianwei of Ontario Institute of Education, University of Toronto, Canada on *Multiple Approaches to Educational Research: The East vs. the West*. Dr. Samuel Peng of the National Taiwan Normal University in Taiwan, the founder and first president of CAERDA closed the conference with an insightful keynote speech on *Pursuing Education Equity: Challenges of Taiwan's Universal Higher Education and Their Implications for Research*.

The 14<sup>th</sup> CAERDA international conference would not be made possible without the close collaboration between CAERDA and the US-China Center for Research on Educational Excellence of Michigan State University; it would not be made possible either without the diligent work of the 2006 Conference Planning Committee. Special recognitions should also go to all the conference participants, because it was their participation that made the conference a big success.



## Membership Renewal



**Important Reminder:** If you have not renewed your membership for 2006, please do it now to avoid being removed from the listserv and journal mailing list!

We were pleased to see many CAERDA members show up at our conference and dinner in San Francisco in April. We particularly appreciated those members who renewed their memberships before and at the conference/dinner. If you have not renewed your membership for 2006, please do it now!

In our previous newsletter, we told you that we were cleaning up our membership database and listserv by removing inactive members. This process is about to complete. Before removing members whose memberships have recently expired, we would like to give them an opportunity to renew their memberships. So, some of you will or may have already received by this time, a message from us to remind you to renew your membership. Please take it serious and do not discard the message. Act quickly to avoid being deleted from the membership database. Please take a look at the following points:

1. Our new starting and ending dates for the **CAERDA regular memberships will be from "May 1 – April 30," effective on May 1, 2007.**
2. Our new membership policy will read as follows:  
 "All regular memberships start on May 1 the current year and end on April 30 the next year. The annual membership due is \$25. Members should renew their memberships before April 30. These membership starting and ending dates are set to allow members to pay their membership dues on-site at the CAERDA conference and dinner, which are usually held in April. Memberships that are not renewed by April 30 will expire and members will lose their benefits.  
 Members can rejoin CAERDA by mailing the completed membership application/renewal form, along with membership due payment to the CAERDA mailbox anytime after their memberships expire. To help us better manage memberships and to avoid interrupted service, members are urged to renew their memberships before April 30 each year."
3. All current 2006 memberships' expiration will be extended to April 30, 2007, effective immediately.

Here is what to do: Download the membership application/renewal form from our membership website: <http://www.caerda.org/membership.htm>. Fill it out and send the completed form along with a check for the annual membership fee to the following address: CAERDA, P. O. Box 112410, Campbell, CA 95011-2410. If you have problems with downloading the form or any questions concerning your membership, please contact: [duc-le.to@ed.gov](mailto:duc-le.to@ed.gov). When you fill out the form, please make sure that the e-mail address and mailing address on the form are correct.

Thank you for your support for CAERDA. The Association will not be able to survive without your support.



## Upcoming Conference: International Conference on Educational Evaluation

### *Call for Proposals*

Sponsored by  
Center for Research on Educational Evaluation and Development  
National Taiwan Normal University

**Date:** November 9-10, 2006

**Place:** National Taiwan Normal University, Taipei, Taiwan

### Topic Areas

The purpose of the conference is to provide a forum for discussing current issues and the state-of-the-art methodologies for the following areas of evaluation:

1. Application of IT for assessing student learning and development
2. Student-based higher education institutional evaluation
3. Evaluation of institutional efficiency, effectiveness, and productivity
4. Value-added assessment of teacher and school performance
5. Framework and indicators for quality schools and teachers
6. Assessment of student learning growth
7. Assessment of high-level abilities such as creativity, critical thinking, synthesis and evaluation
8. Assessment of EQ and morality
9. Assessment of literacy and proficiency in certain subject areas such as Chinese and English language, IT application, math, and science.
10. Educational program and policy evaluation

### Submitting Proposals

1. Create a title page for your submission. The title page should include:

- title of the submission
- topic area of the submission (choose from above list)
- name(s) of the author(s)
- department(s) and affiliation(s)
- mailing address(es)
- e-mail address(es)
- phone number(s)
- corresponding author if different than lead author

2. Email your proposal of 2-3 pages, summary with an abstract, and the title page, to [evaluation@ntnu.edu.tw](mailto:evaluation@ntnu.edu.tw)

3. The deadline for submitting proposals is August 15, 2006. If the proposal is accepted, a full paper in WORD format must be emailed by October 20, 2006.

4. If the proposal is accepted for presentation, international presenters will be offered round trip airfares of economy class, four days housing, and manuscript fee.



## Upcoming Conference: 2007 CAERDA International Conference



### *Call for Proposals*

**Sponsors:** The 2007 CAERDA Conference is hosted by Chinese American Educational Research and Development Association.

**Time and Place:** This one-and-a-half-day conference will take place from Sunday morning, April 8 to Monday noon, April 9, 2007 at one of the AERA headquarter hotels in Chicago, Illinois, USA.

**Conference Theme:** The theme of the 2007 CAERDA Conference is “*Demystifying Model Minority’s Academic Achievement: Implications of Chinese/Asian Educational Principles and Practices for a Global Learning Community.*”

In an era of accountability reform and increasing globalization, many educational researchers and practitioners turn to Asian cultures and educational models for inspiration. This theme provides multiple venues for a renewed interest in understanding the “Model Minority” phenomena and solicits a heightened focus on the recent advances in cross-cultural multi-ethnic educational research. To encourage multidisciplinary work that goes beyond the educational borders, we invite an expanded discussion and engaging dialogue on Model Minority research from multiple perspectives, including but not limited to *socio-cultural, psychological, neuro-cognitive, and methodological*. Both theoretical and empirical studies are welcome, as long as they provide invigorating insights and provoke intellectual inquiry. We are particularly interested in scholarly work that “demystifies” the complex Model Minority phenomena and has implications for educators from around the world.

In keeping with the CAERDA conference tradition, we also welcome studies on other areas of research and practice that may not be directly related to the conference theme, but they must be aligned with the CAERDA’s mission in promoting educational excellence and equity for all, particularly among Chinese and Chinese Americans.

**Proposal Submission:** Proposals are accepted beginning *August 1, 2006* and ending *October 1, 2006*. All proposals must be submitted electronically at [www.CAERDA.org](http://www.CAERDA.org) through the Online Proposal Submission System. Both CAERDA members and non-members with or without an ethnic Chinese background may submit proposals for review.

**Review and Notification:** All proposals will be blind-reviewed by at least two reviewers. Proposal submitters will receive notification of decision in *December, 2006*. If your proposal is accepted and placed in a paper or symposium session, you must submit the full paper electronically to your session Chair and Discussant by *March 15, 2007*. If your proposal is accepted and placed in a poster session, you must follow the Presentation Guidelines on the CAERDA website for preparing the poster.

**Contact:** For more information on this Call, please visit [www.CAERDA.org](http://www.CAERDA.org) or contact Conference Chair Lihshing Leigh Wang at [Leigh.Wang@uc.edu](mailto:Leigh.Wang@uc.edu)



# Positions Announcement

**HOT !!!**

**JOB**

[evaluation@ntnu.edu.tw](mailto:evaluation@ntnu.edu.tw)

## *Postdoctoral Researcher*

1. Duties: Research on educational evaluation and development.
2. Qualifications: Ph. D., with an emphasis in educational evaluation, and specialized knowledge in areas such as institutional evaluation, personnel evaluation, learning assessment, e-learning and evaluation, and statistical data analysis etc..
3. Position: The initial appointment will be for one and a half years (July, 2006–December, 2007), with the possibility or renewal depending on performance and continued funding. Starting salary about NT\$ 55,000 a month.
4. Please submit personal CV and a statement of interest to Mr. Yiren Shi (162, Sec. 1, Heping E. Road, Center for Research on Educational Evaluation and Development, National Taiwan Normal University, Taipei, Taiwan, 106). Your CV and statement of interest may also be sent via email to [evaluation@ntnu.edu.tw](mailto:evaluation@ntnu.edu.tw).

